

# DOUBLE GLASS DOOR MERCHANDISER

**MODEL: VC49**

**PRO-KOLD**

## Product Features

- ⦿ Easy access to the condensing unit for cleaning
- ⦿ Double pane glass doors offer greater insulation and resistance, which helps optimize the use of energy
- ⦿ Digital control for easy read-out and temperature adjustment
- ⦿ Self-closing door to reduce heat transfer and save energy
- ⦿ Easy to clean stainless steel floor
- ⦿ Adjustable shelves to suit your display needs
- ⦿ LED lighting for optimal product display
- ⦿ Coolant friendly to the environment



## Accessories

- ⦿ Casters
- ⦿ Preparation for heavy duty wheels for easy displacement (sold as accessory does not include installation)

## Product highlights



Stainless steel floor



Adjustable grills



Space for advertising

## Certifications



## Warranty

- ⦿ 2 Years Parts and labor
- ⦿ Additional 3 years compressor coverage

Residential: Assumes on liability for parts or labor coverage for component failure, factory defect or any other damages for units installed in non-commercial foodservice or residential applications.

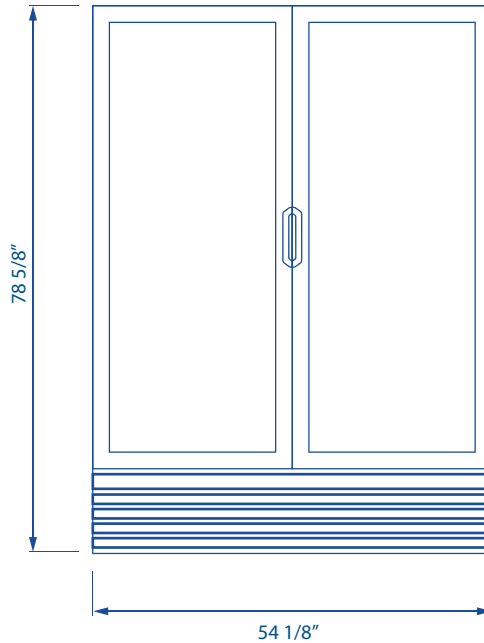
## PRODUCT SPECIFICATIONS

### MODEL: VC49

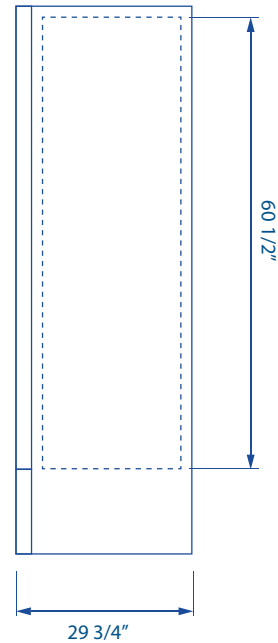
# PRO-KOLD

## Plan view

Front View



Side View



## Technical data

### Dimensions

External Dimensions	W: 54 1/8" D: 29 3/4" H: 78 5/8"
Internal Dimensions	W: 50" D: 24 7/8" H: 59 5/8"
Usable Internal	W: 48 1/2" D: 21 5/8" H: 53 1/4"
Net volume	41.6 ft <sup>3</sup> (1180 Lts.)
Net Weight	466.2 Lbs.
Gross weight	472.9 Lbs.
Packaging dimensions	W: 55 1/8" D: 30 5/8" H: 81 7/8"

### Electrical data

Power supply	110v/ 60 Hz
Amps	8.7
Length of Cord	118" (3000 mm)
Lighting	312 LUX 9 modules
LED per module	8
Plug type	PC-731

### Performance data

Refrigerant charge	3.52 oz
Energy consumption	3.290 kwh/24h
Compressor power	3/4 HP
Condenser	Finless
Evaporator	Dynamic

### Cooling

Temperature range	36°F - 41°F
Refrigerant	R290
Max. ambient temperature	90° F
Defrosting	Automatic
Temperature controller	Digital

### Construction

Exterior material	Coated steel
Interior material	Aluminum
Door type	Glass swing

### Logistic data

Trailer Loads	53':30 40':24
Unit Weight with packaging	472.9 lb (214.5 kg)
Dimensions with packaging	W: 55 1/8" D: 30 5/8" H: 81 7/8"

\* W= Width, D= Depth, H= Height