

# PRO-KOLD

## SPEC SHEETS

**MODEL: VC23 PKD**

## GLASS DOOR REFRIGERATOR

### Product Features

- Easy access to the engine for cleaning
- Double glass door, offers greater insulation and resistance which helps optimize the use of energy
- Your food always fresh and at the ideal temperature
- Advertising display  
You can place promotions of your business to increase your sales
- Door with self closing
- Automatic / night mode, helps reduce energy consumption
- Stainless steel floor, much more hygienic and easy to clean
- Best exhibition thanks to its adjustable grills
- LED lighting inside the refrigerator
- Coolant friendly to the environment

### Accessories

- Gravity kits, sandwich trays and freezer baskets
- Casters and leveling leg
- Preparation for heavy duty wheels for easy displacement (sold as accessory does not include installation)

### Product highlights



Stainless steel floor



Adjustable grills



Space for advertising

### Certifications



### Warranty

- 2 Years Parts and labor
- 3 Years compressor coverage

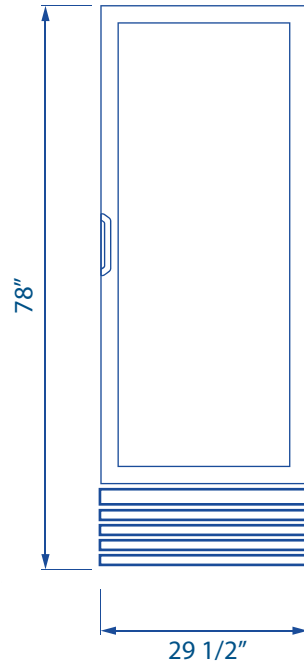
Residential: Assumes on liability for parts or labor coverage for component failure, factory defect or any other damages for units installed in non-commercial foodservice or residential applications.

## PRODUCT SPECIFICATIONS

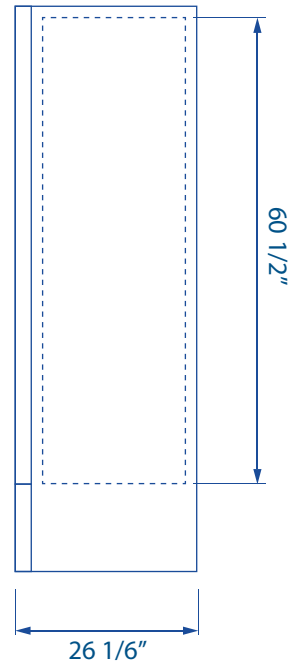
### MODEL: VC23 PKD

# PRO-KOLD

### Plan view



Front View



Side View

## Technical data

### Dimensions

External Dimensions	H 78" W 29 1/2" D 26 1/6"
Internal Dimensions	H 60 1/2" W 25 1/2" D 21 3/4"
Usable Internal	H 54 4/7" W 25 1/6" D 19"
Net volume	19.3 ft <sup>3</sup> 546.6 lts
Net Weight	223.77 Lbs.
Gross weight	240.52 Lbs.
Packaging dimensions	H 81 8/9" W 21 1/4" D 26 3/8"

### Performance data

Refrigerant charge	1.94 oz
Energy consumption	1.82 kwh/24h
Compressor power	1/4 hp
Condenser	Finless
Evaporator	Dynamic
Thermostat Setting	Cut-out 32F 0C Cut-out 44.6F 7C

### Construction

Exterior material	Coated steel
Interior material	Aluminum
Door type	Glass sliding

### Electrical data

Power supply	115v/ 60 Hz
Amps	4.6
Cord d Length	118" 3000 mm
Lighting	180 LUX 2 modules 18 LED per module
Plug type	NEMA 5-15P
Controller	ERC

### Cooling

Temperature range	33°F - 40°F
Refrigerant	R290
Max. ambient temperature	90° F
Defrosting	Automatic
Temperature controller	Digital
Horsepower	1/4

### Logistic data

Trailer Loads	53':104 40':75
Unit Weight with packaging	240.52lb 109.1 kg
Dimensions with packaging	H 81 8/9" W 21 1/4" D 26 3/8"

\* L= Length, D= Depth, H= Height

\* TBD= to be define