

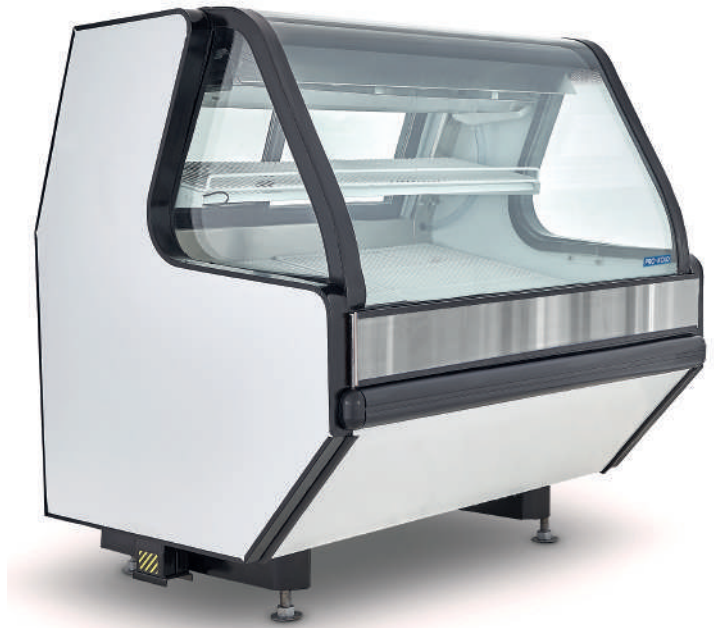
REMOTE, FRESH RED MEAT DISPLAY

MODEL: MCRU52W

PRO-KOLD

Product features

- Compact, efficient case ideal for small spaces without sacrificing capacity or visual presence.
- Easily removable, (2) rear sliding doors for ease of loading and unloading product
- White foil interior finish: Reflects light and gives a clean image, highlighting the freshness of the product.
- Stainless steel advertising display: Useful space to highlight promotions, brands, or features of the product on display.
- Frontal bumper strategically placed to assist in avoiding accidents and damage to unit
- Stainless steel counter: Durable, hygienic, and easy to clean, perfect for food preparation or direct service.
- Storage: Forced air evaporator in storage that guarantees uniform cold distribution.



Available Color

WHITE

Accessories

- Stainless steel fish trays

Product highlights



LED Lighting



Sliding, rear work table



Rear, undercounter storage

Certifications



Warranty

- 2 Year parts and labor
- Additional 3 year compressor coverage

Residential: Assumes on liability for parts or labor coverage for component failure, factory defect or any other damages for units installed in non-commercial foodservice or residential applications.

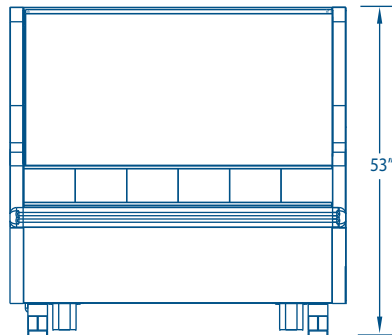
PRODUCT SPECIFICATIONS

MODEL: MCRU52W

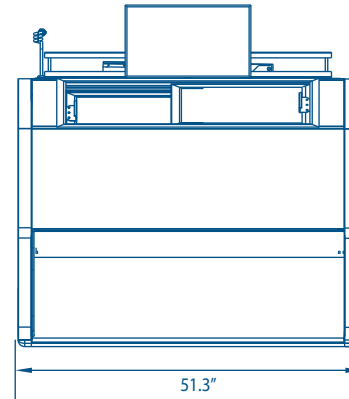
PRO-KOLD

Plan view

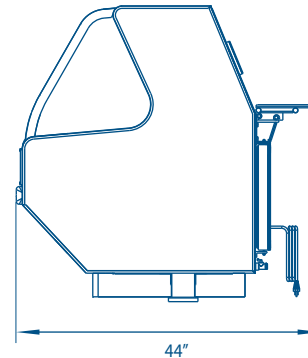
Front view



Top view



Side view



Technical data

Dimensions

External dimensions	W: 51.3" D: 44" H: 53"
Internal dimensions	W: 47.2" D: 33.4" H: 21.3"
Net volume	465,6 Lbs.
Net Weight	15.8 ft3 (450 lts)
Gross weight	550 Lbs.
Packging dimensions	W: 59.5" D: 33.4" H: 21.3"

Performance data

Refrigerant charge	Not available
Energy consumption	Not available
Compressor Power	Remote unit*
Evaporation temperature	-13 °F (-25°C)
Expansion method	Expansion valve
Defrost method	Hot gas

Construction

Exterior material	Pre-painted sheet
Interior material	Pre-painted sheet
Number of interior shelf levels	2
Shelf material	Steel
Door type	Sliding glass (upper), Solid (lower)
Door quantity	Upper (2), Lower (1)

Electrical data

Power supply	120V/ 60 Hz
Amps	Not available
Length of cord	74.80" (1900 mm)
Lighting	LED
Plug type	NEM A 5-15 P
Controller	Mechanic

Cooling

Display temperature	0°C a -8°C
Display evaporator	Natural convection
Storage Temperature	-5°C a -15°C
Storage Evaporator	Forced convection
Cut In	-7°C
Cut Out	-15°C

Logistic data

Trailer Loads	12 fit on a 53' trailer
Trailer Loads	11 fit on a 48' trailer
Unit weight with packaging	550 lb
Dimensions with packaging	W: 59.5" D: 50.5" H: 57.5"

* W= Width, D= Depth, H= Height

* For further information on the proper selection of the condensing unit for your display case, please identify the model of your equipment and share it with your authorized Pro-kold distributor to receive technical assistance.